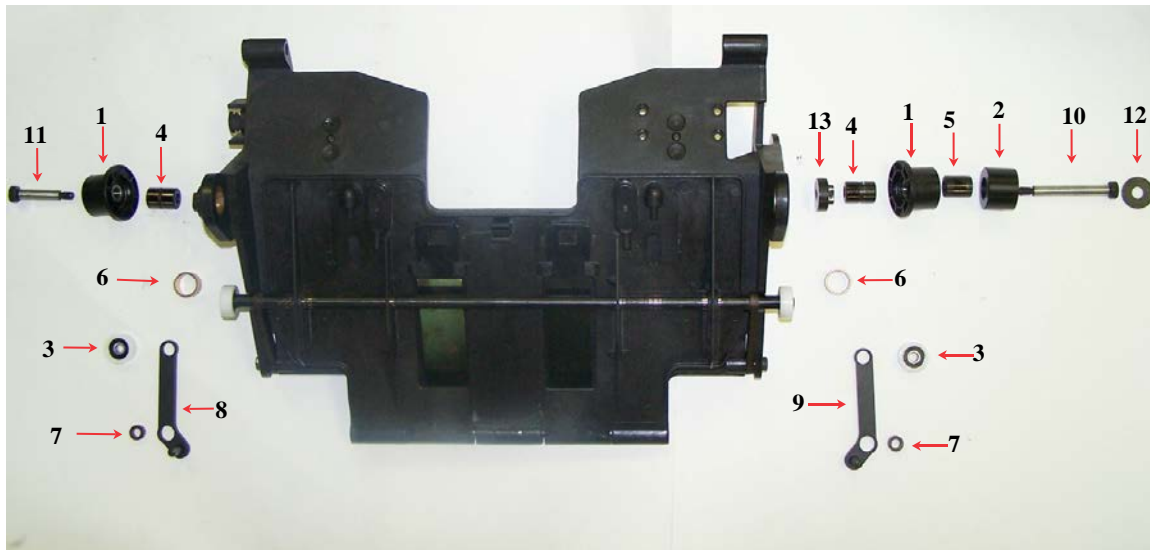




SLS2000

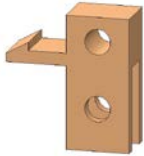


SLS2000 POCKET REBUILD PARTS

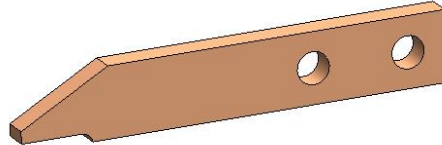


ITEM	PART NUMBER	DESCRIPTION
1	GMA0194	POCKET SUPPORT ROLLER (FLANGE)
2	GMA0203	SECONDARY POCKET SUPPORT ROLLER
3	GMA0195	WHITE ROLLER W/BEARING
4	GMA0206	POCKET ROLLER SPACER
5	GMA0204	SECONDARY POCKET SUPPORT SPACER
6	GMA0217	PIVOT BUSHING (REBORE)
7	GMA0272	POCKET CLOSING PIVOT BUSHING
8	GMA0268	POCKET CLOSING LEVER-DRIVE SIDE (LH)
9	GMA0269	POCKET CLOSING LEVER-ELECTRIC SIDE (RH)
10	KMS 1205	POCKET ROLLER SHOULDER BOLT (RH)
11	KMS 1207	POCKET ROLLER SHOULDER BOLT (LH)
12	KMS 1206	POCKET ROLLER WASHER
13	GMA0205	POCKET ROLLER NUT (NOT SHOWN ON LEFT)

HOPPER PARTS



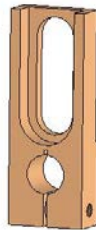
GMA0002
Hopper Inhibit Latch
(7702.2246)



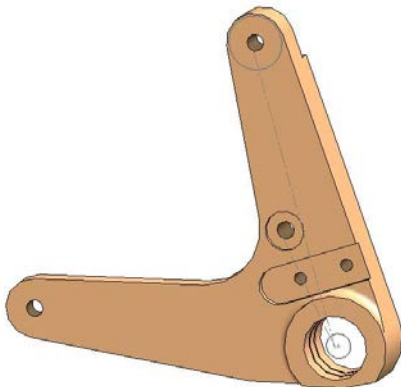
GMA0003
Hopper Inhibit Latch Plate
(7702.2244)



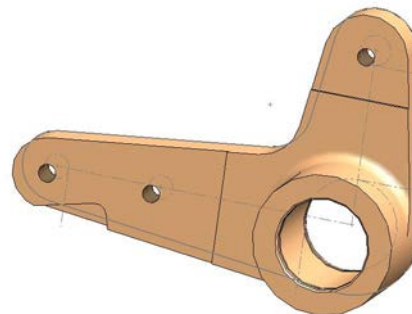
GMA0004
Hopper Inhibit Link
(7702.2245)



GMA0006
Follower Guide
(7702.2892.3)



GMA0005
Follower Arm
(7702.2871)



GMA0007
LifTHOOK Cam Lever
(7702.3429)

HOPPER PARTS

ITEM NO.	PART NUMBER	DESCRIPTION	QTY.
6	SLS2000HOPPER-8	CLAMP PLATE	1
8	GMA0002	HOPPER INHIBIT LATCH, SLS2000	1
9	GMA0003	HOPPER INHIBIT LATCH PLATE SLS2000, OLD VERSION	1
10	GMA0004	HOPPER INHIBIT LINK	1
11	GMA0005	ARM, FOLLOWER SLS2000	1
12	GMA0006	GUIDE, FOLLOWER	1
13	GMA0249	HOPPER INHIBIT LATCH PLATE SLS2000 UPDATE	1
14	GMA0250	BLOCK	1
15	GMA0251	CYLINDER BRACKET, INHIBIT	1
16	GMA0252	TIMING COLLOR	1
17	GMA0007	LIFTHOOK CAM LEVER - (M10X1.50 CAM FOLLOWER THD'S)	1
18	GMA0340	SHAFT, GRIPPER SLS2000	1
19	GMA0442	BEARING, CAM ROLLER W/M10X1.5 THREADS	1
20	KMS1625	6000RS BEARING	2
21	GMA0471	SHAFT, SLS2000 HOPPER DRUM	2
22	GMA0469	BEARING, ROLLER	2
23	GMA0470	MODIFIED CLEVIS	1
24	KMS1360	CAM FOLLOWER, 22MM W/M10X1.0 THREADS	1
25	GMA0521	LIFT FOOT LEVER, (M10X1.0 CAM FOLLOWER THD'S)	1

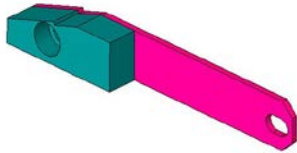
The diagram shows an exploded view of the hopper assembly. Callout 8 points to the main hopper body. Callout 9 points to the latch plate. Callout 10 points to the link. Callout 11 points to the arm. Callout 12 points to the guide. Callout 13 points to the updated latch plate. Callout 14 points to the block. Callout 15 points to the cylinder bracket. Callout 16 points to the timing collar. Callout 17 points to the lifTHOOK cam lever. Callout 18 points to the shaft. Callout 19 points to the bearing. Callout 20 points to the roller bearing. Callout 21 points to the drum shaft. Callout 22 points to the roller bearing. Callout 23 points to the modified clevis. Callout 24 points to the cam follower. Callout 25 points to the lift foot lever.

DATE	REV.	DESCRIPTION	DATE	APPROVED
	A	RELEASE		ALK

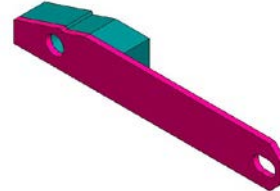
UNLESS OTHERWISE SPECIFIED:
 DIMENSIONS ARE IN INCHES
 TOLERANCES: FRACTIONS DECIMALS ANGULAR VALUES LEG. SLOPE TWO PLACE DECIMAL S. 25

DATE	REV.	TITLE
	ALK	K&M NEWSPAPER SERVICES

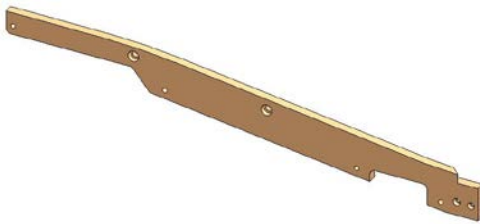
INSERTER PARTS



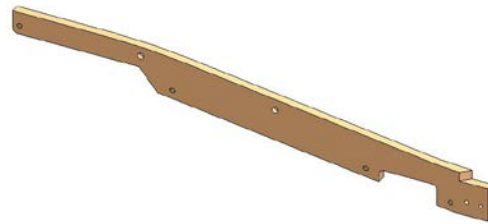
GMA0030
Support, Finger Cam LH ASSY
(7702.3287.3)



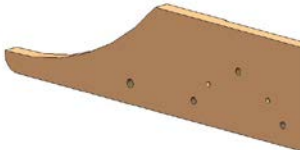
GMA0031
Support, Finger Cam RH ASSY
(7702.3288.3)



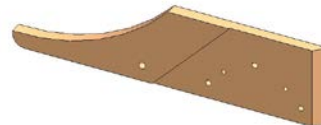
GMA0050
Rail, Roller LH
(7702.2921)



GMA0049
Rail, Roller RH
(7702.2922)

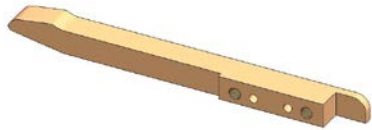


GMA0035
Transition Plate UI-LR
(7702.4194.2)

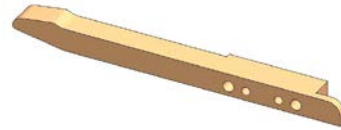


GMA0036
Transition Plate, LL-UR
(7702.4195.2)

INSERTER PARTS



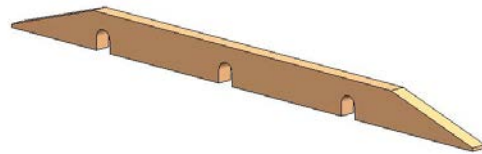
GMA0001
Cam, Rail ARS LH
(7702.3117..3)



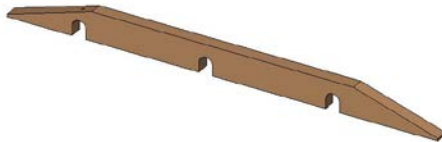
GMA0051
Cam, Rail ARS RH
(7702.3119)



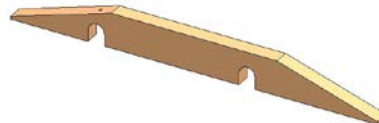
GMA0032
Cam, Gripper, Lap Open, LH
(7702.3091)



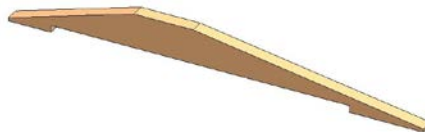
GMA0033
Cam, Gripper, Lap Open, RH
(7702.3092)



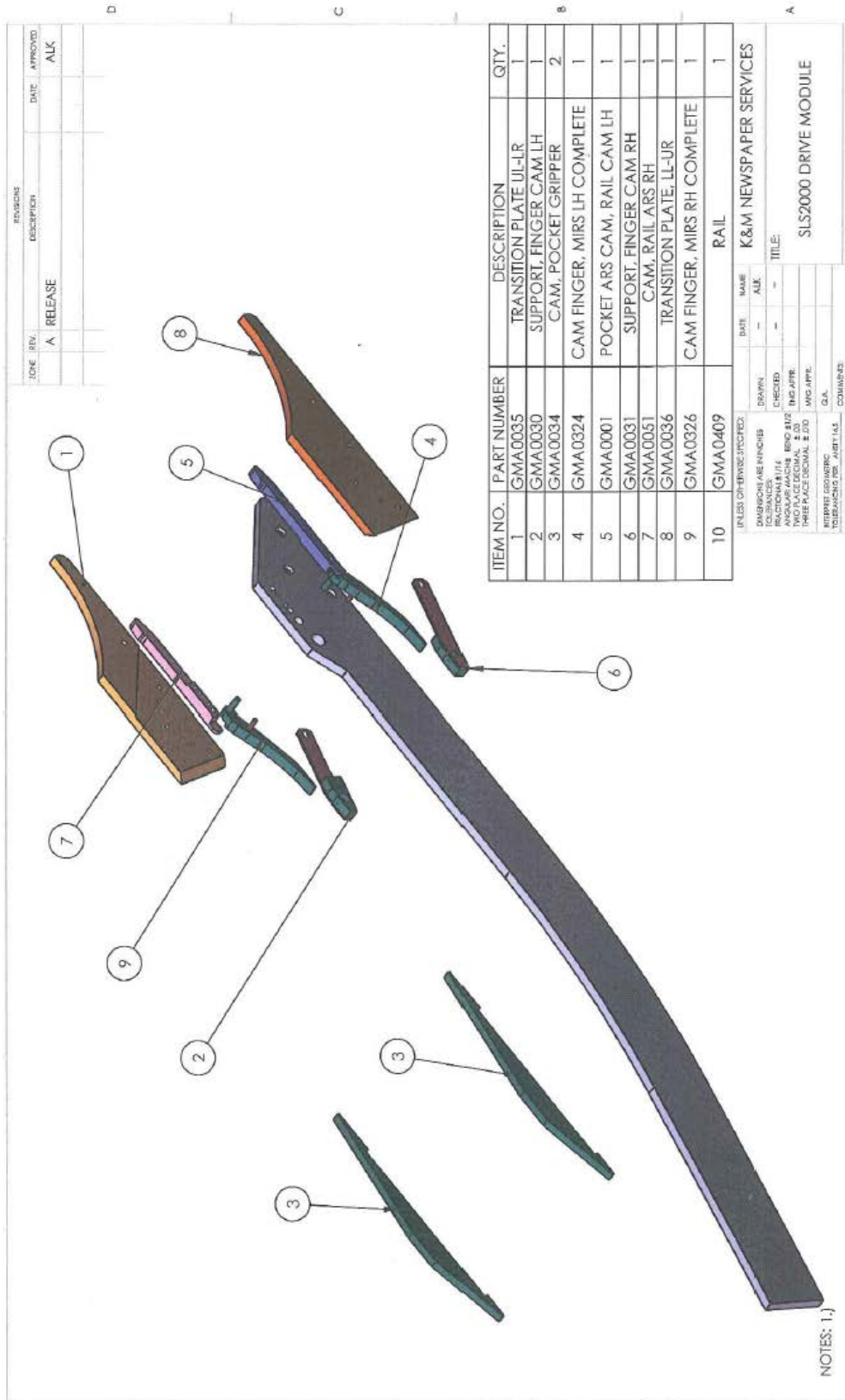
GMA0009
Cam, Gripper LH Vac Open
(7702.3093)



GMA0008
Cam, Gripper, RH Vac Open
(7702.3094)



GMA0034
Cam, Pocket Gripper
(7702.3226)



ITEM NO.	PART NUMBER	DESCRIPTION	QTY.
1	GMA0035	TRANSITION PLATE UI-LR	1
2	GMA0030	SUPPORT FINGER CAM LH	1
3	GMA0034	CAM, POCKET GRIPPER	2
4	GMA0324	CAM FINGER, MIRS LH COMPLETE	1
5	GMA0001	POCKET ARS CAM, RAIL CAM LH	1
6	GMA0031	SUPPORT FINGER CAM RH	1
7	GMA0051	CAM, RAIL ARS RH	1
8	GMA0036	TRANSITION PLATE, LL-UR	1
9	GMA0326	CAM FINGER, MIRS RH COMPLETE	1
10	GMA0409	RAIL	1

DATE	NAME	DATE	NAME
	ALK		ALK
DRAWN		CHECKED	
REVISION # / 1/E		ENG APPR.	
ANGULAR MATCH		MKS APPR.	
THREE PLACE DECIMAL		G.A.	
INTERPRET GEOMETRIC TOLERANCES PER ASME Y14.5		COMMENTS	
K&M NEWSPAPER SERVICES			
TITLE:			
SLS2000 DRIVE MODULE			

NOTES: 1-1

MIRS POD (D CAM)

REVISION

DATE	APPROVED
5/15/11	ALK

DESCRIPTION

ZONE	REV.	DATE	APPROVED
A	RELEASE		

ITEM NO.	PART NUMBER	DESCRIPTION	QTY.
1	GMA0343	BEARING BLOCK	1
2	GMA0344	CAM, MIRS	1
3	GMA0345	SHAFT, ANTI-ROTATION	1
4	GMA0346	SHAFT, GUIDE	1
5	KMS1271	PARALLEL PIN, 3M6X9	1
6	GMA0195	BEARING, ROLLER	1
7	GMA0347	SPACER	1
8	KMS1272	PIN, SPRING 3MM X 16MM	1
9	KMS1273	BEARING, LINEAR 10MM ID	1
10	KMS1274	BEARING, LINEAR 20MM ID	1
11	KMS1275	O-RING, 2MM X 1.5, 5MM	2
12	KMS1276	RETAINING RING, 20MM SHAFT	1
13	KMS1277	WASHER	2
14	KMS1279	SECURE WASHER, M6 SERRATED	4
15	KMS1280	SCREW, BUTTON HEAD M6 X 20MM	1
16	KMS1282	SCREW, BUTTON HEAD M8 X 25MM	1
17	KMS1278	SCREW, BUTTON HEAD M4 X 8MM	2
18	KMS1281	SCREW, ALLEN HEAD CAP M6 X 20	3

UNITED STATES SPECIFIC:

DATE	REV.	DESCRIPTION
5/15/11	ALK	

PROPERTY IS NOT CONFIDENTIAL
 THIS DRAWING IS THE PROPERTY OF K&M NEWSPAPER SERVICES, INC. IT IS TO BE USED ONLY FOR THE PROJECT AND QUANTITY SPECIFIED THEREIN. IT IS NOT TO BE REPRODUCED OR TRANSMITTED IN ANY FORM OR BY ANY MEANS, ELECTRONIC OR MECHANICAL, INCLUDING PHOTOCOPYING, RECORDING, OR BY ANY INFORMATION STORAGE AND RETRIEVAL SYSTEM, WITHOUT THE WRITTEN PERMISSION OF K&M NEWSPAPER SERVICES, INC.

NOTES: 1.)

DATE	REV.	DESCRIPTION
5/15/11	ALK	

PROPERTY IS NOT CONFIDENTIAL
 THIS DRAWING IS THE PROPERTY OF K&M NEWSPAPER SERVICES, INC. IT IS TO BE USED ONLY FOR THE PROJECT AND QUANTITY SPECIFIED THEREIN. IT IS NOT TO BE REPRODUCED OR TRANSMITTED IN ANY FORM OR BY ANY MEANS, ELECTRONIC OR MECHANICAL, INCLUDING PHOTOCOPYING, RECORDING, OR BY ANY INFORMATION STORAGE AND RETRIEVAL SYSTEM, WITHOUT THE WRITTEN PERMISSION OF K&M NEWSPAPER SERVICES, INC.

PROPERTY IS NOT CONFIDENTIAL
 THIS DRAWING IS THE PROPERTY OF K&M NEWSPAPER SERVICES, INC. IT IS TO BE USED ONLY FOR THE PROJECT AND QUANTITY SPECIFIED THEREIN. IT IS NOT TO BE REPRODUCED OR TRANSMITTED IN ANY FORM OR BY ANY MEANS, ELECTRONIC OR MECHANICAL, INCLUDING PHOTOCOPYING, RECORDING, OR BY ANY INFORMATION STORAGE AND RETRIEVAL SYSTEM, WITHOUT THE WRITTEN PERMISSION OF K&M NEWSPAPER SERVICES, INC.

PROPERTY IS NOT CONFIDENTIAL
 THIS DRAWING IS THE PROPERTY OF K&M NEWSPAPER SERVICES, INC. IT IS TO BE USED ONLY FOR THE PROJECT AND QUANTITY SPECIFIED THEREIN. IT IS NOT TO BE REPRODUCED OR TRANSMITTED IN ANY FORM OR BY ANY MEANS, ELECTRONIC OR MECHANICAL, INCLUDING PHOTOCOPYING, RECORDING, OR BY ANY INFORMATION STORAGE AND RETRIEVAL SYSTEM, WITHOUT THE WRITTEN PERMISSION OF K&M NEWSPAPER SERVICES, INC.

PLASTIC METRIC GRIPPER CHAIN



**WE NOW HAVE A FULL LINE OF GRIPPER CHAIN PARTS
INCLUDING PROFILES, TRACK, SPROCKETS, SHAFTS AND BEARINGS
HORIZONTAL & VERTICAL CURVES ALSO AVAILABLE**

ARTICULATING GRIPPERS

ITEM NO.	PART NUMBER	DESCRIPTION	QTY.
1	GMA0040A	FLANGE ASSEMBLY, SLS2000	1
2	GMA0019	CLUTCH ASSEMBLY, PSI	1
3	GMA0048	GEAR, DRIVEN	1
4	GMA0375	GEAR, DRIVER	1
5	GMA0366	LUG, GRIPPER	1
6	GMA0367	BEARING TUBE ASSY	1
7	GMA0370	SPACER, GRIPPER SPRING	1
8	GMA0371	SPRING, TORSION, L.H.	1
9	GMA0372	BLOCK, PICKUP	1
10	GMA0373	STUD	1
11	KMS0244	ROLLER-SLS GRIPPER	1
12	KMS9714	ROLLER-SLS GRIPPER	1
13	12MM-20MM	12mm X 20mm SHOULDER SCREW	1
14	M10-1.50 X 24MM BHC	M10 X 1.50 X 25MM BHC	1
15	GMA0374	SPACER	2
16	GMA0376	SPACER	1
17	12 X .50	12mm X 20mm SHOULDER SCREW	1
18	KMS12B7	WASHER, 1/2" X 3/4" X .062	1
19	GMA0490	LATCH SET GAUGE, SLS2000 GRIPPER	1

NOTES: 1.)

PROPERTY AND CONFIDENTIALITY STATEMENT: THIS DRAWING IS THE PROPERTY OF K&M NEWS PAPER SERVICES, INC. AND IS NOT TO BE REPRODUCED OR TRANSMITTED IN ANY FORM OR BY ANY MEANS, ELECTRONIC OR MECHANICAL, INCLUDING PHOTOCOPYING, RECORDING, OR BY ANY INFORMATION STORAGE AND RETRIEVAL SYSTEM. ANY UNAUTHORIZED REPRODUCTION OR USE OF THIS DRAWING IS STRICTLY PROHIBITED.

DATE: 11/15/11
 DRAWN BY: ALK
 CHECKED BY: ALK
 ENG APPR: ALK
 MFG APPR: ALK
 D.A.
 COMMENTS:

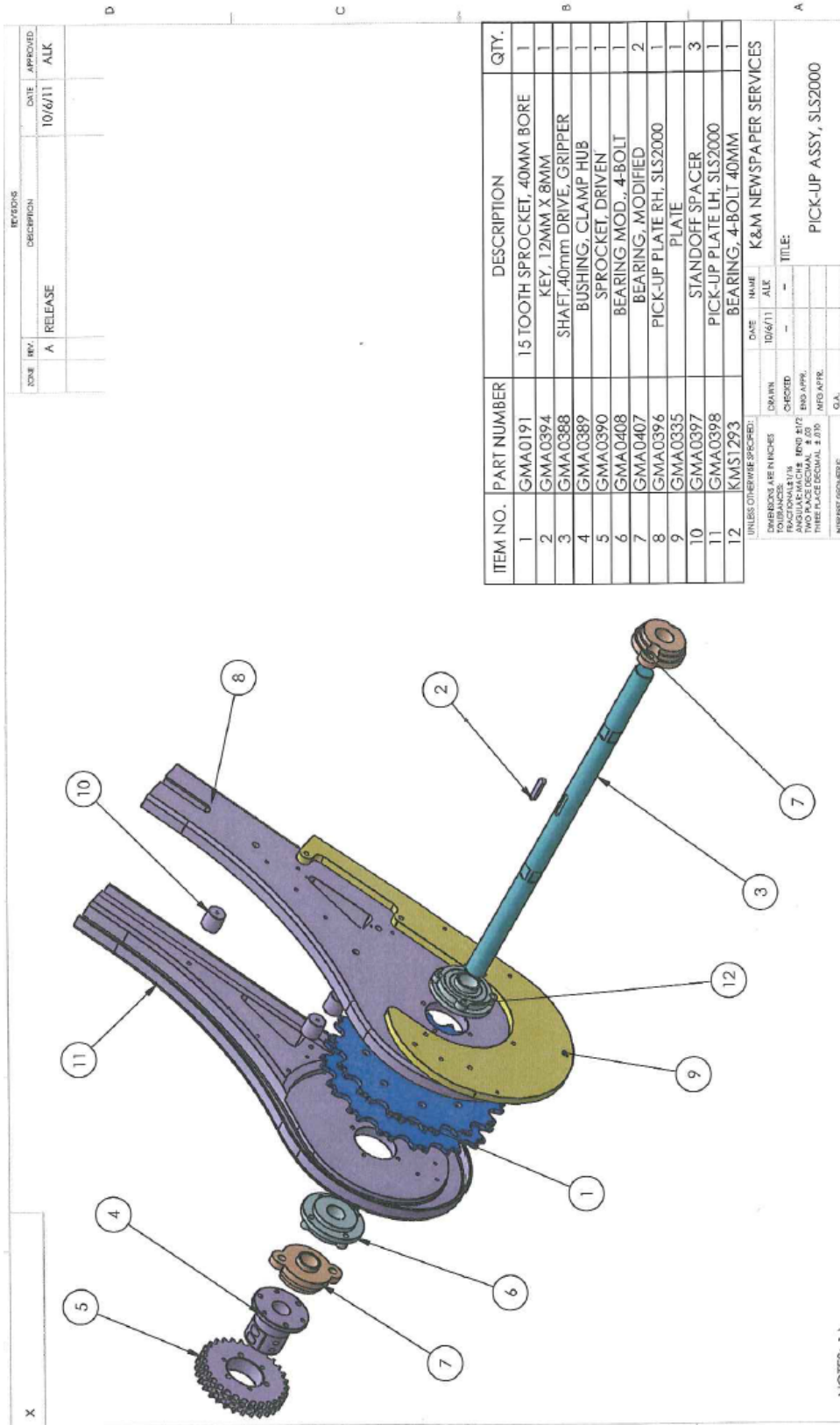
K&M NEWSPAPER SERVICES
 TITLE: GRIPPER, SLS2000 WITH PSI CLUTCH, METAL GEARS
 SEE DWG. NO. GMA0365
 REV B
 SCALE: 1:2 WEIGHT: SHEET 1 OF 1



GMA0436
GEAR ARM

GMA0435
DRIVEN GEAR

GMA0490
GRIPPER LATCH
SET UP GAUGE

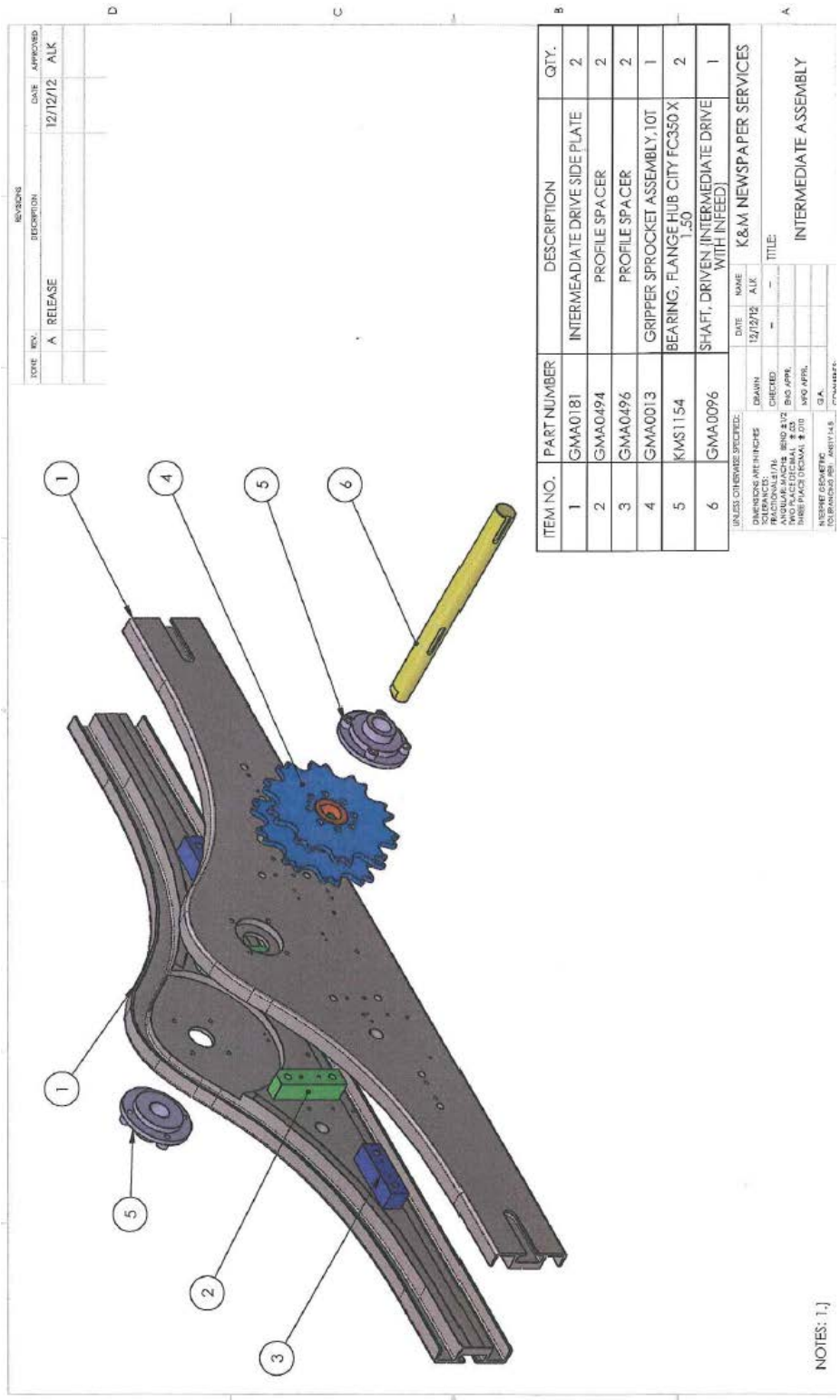


ITEM NO.	PART NUMBER	DESCRIPTION	QTY.
1	GMA0191	15 TOOTH SPROCKET, 40MM BORE	1
2	GMA0394	KEY, 12MM X 8MM	1
3	GMA0388	SHAFT, 40mm DRIVE GRIPPER	1
4	GMA0389	BUSHING, CLAMP HUB	1
5	GMA0390	SPROCKET, DRIVEN	1
6	GMA0408	BEARING MOD., 4-BOLT	1
7	GMA0407	BEARING, MODIFIED	2
8	GMA0396	PICK-UP PLATE RH, SLS2000	1
9	GMA0335	PLATE	1
10	GMA0397	STANDOFF SPACER	3
11	GMA0398	PICK-UP PLATE LH, SLS2000	1
12	KMS1293	BEARING, 4-BOLT 40MM	1

DATE	NAME	DESCRIPTION
10/6/11	ALK	K&M NEWSPAPER SERVICES

DATE	NAME	TITLE

NOTES: 1:1



DATE	REV.	DESCRIPTION	DATE	APPROVED
	A	RELEASE	12/12/12	ALK

ITEM NO.	PART NUMBER	DESCRIPTION	QTY.
1	GMA0181	INTERMEDIATE DRIVE SIDE PLATE	2
2	GMA0494	PROFILE SPACER	2
3	GMA0496	PROFILE SPACER	2
4	GMA0013	GRIPPER SPROCKET ASSEMBLY, 1.0T	1
5	KMS1154	BEARING, FLANGE HUB CITY FC350 X 1.50	2
6	GMA0096	SHAFT, DRIVEN INTERMEDIATE DRIVE WITH INFEED	1

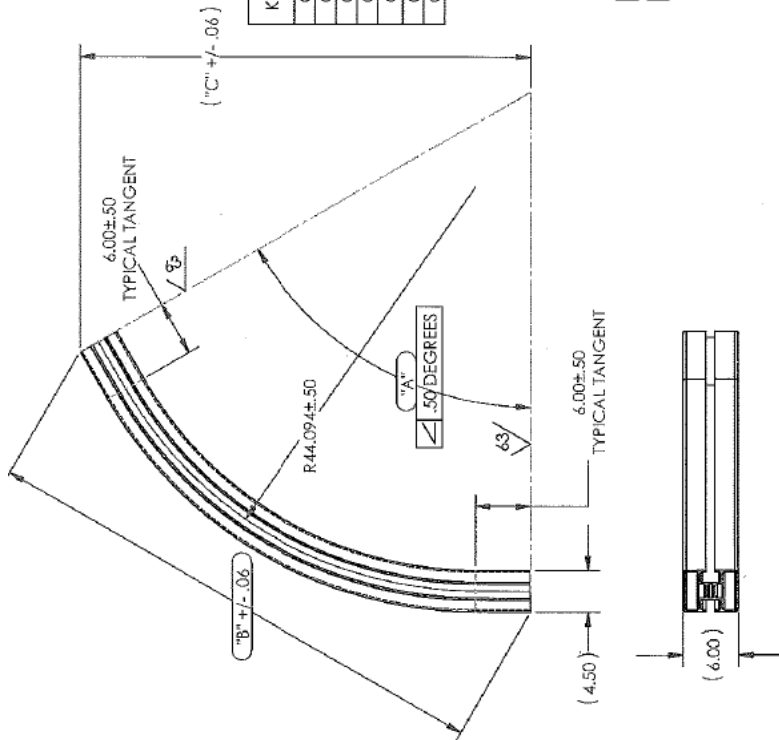
DATE	DATE	NAME	NAME
12/12/12	12/12/12	ALK	ALK

DRAWN: _____ CHECKED: _____
 DIMENSIONS IN INCHES: _____
 DIMENSIONS IN MILLIMETERS: _____
 FRACTIONS: 1/16, 1/8, 3/16, 1/2, 5/8, 3/4, 7/8
 DECIMALS: .03125, .0625, .125, .25, .5, .75, 1.0, 1.5, 2.0, 3.0, 4.0, 5.0, 6.0, 7.0, 8.0, 9.0, 10.0
 THIS PLACE DECIMAL: 8 270 INFO APPR. _____
 UNLESS OTHERWISE SPECIFIED: _____
 ALL DIMENSIONS ARE TO CENTER UNLESS OTHERWISE SPECIFIED: _____
 G.A. _____
 FOR BRANCHES: 800.488.7143. 7744444444

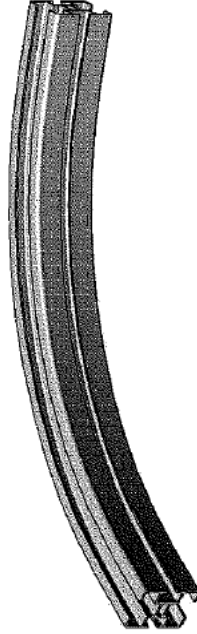
TITLE: INTERMEDIATE ASSEMBLY

NOTES: 1.]

A	RELEASE	1/6/10	ALK
B	44.099 RADIUS WAS 44.062	5/18/10	ALK



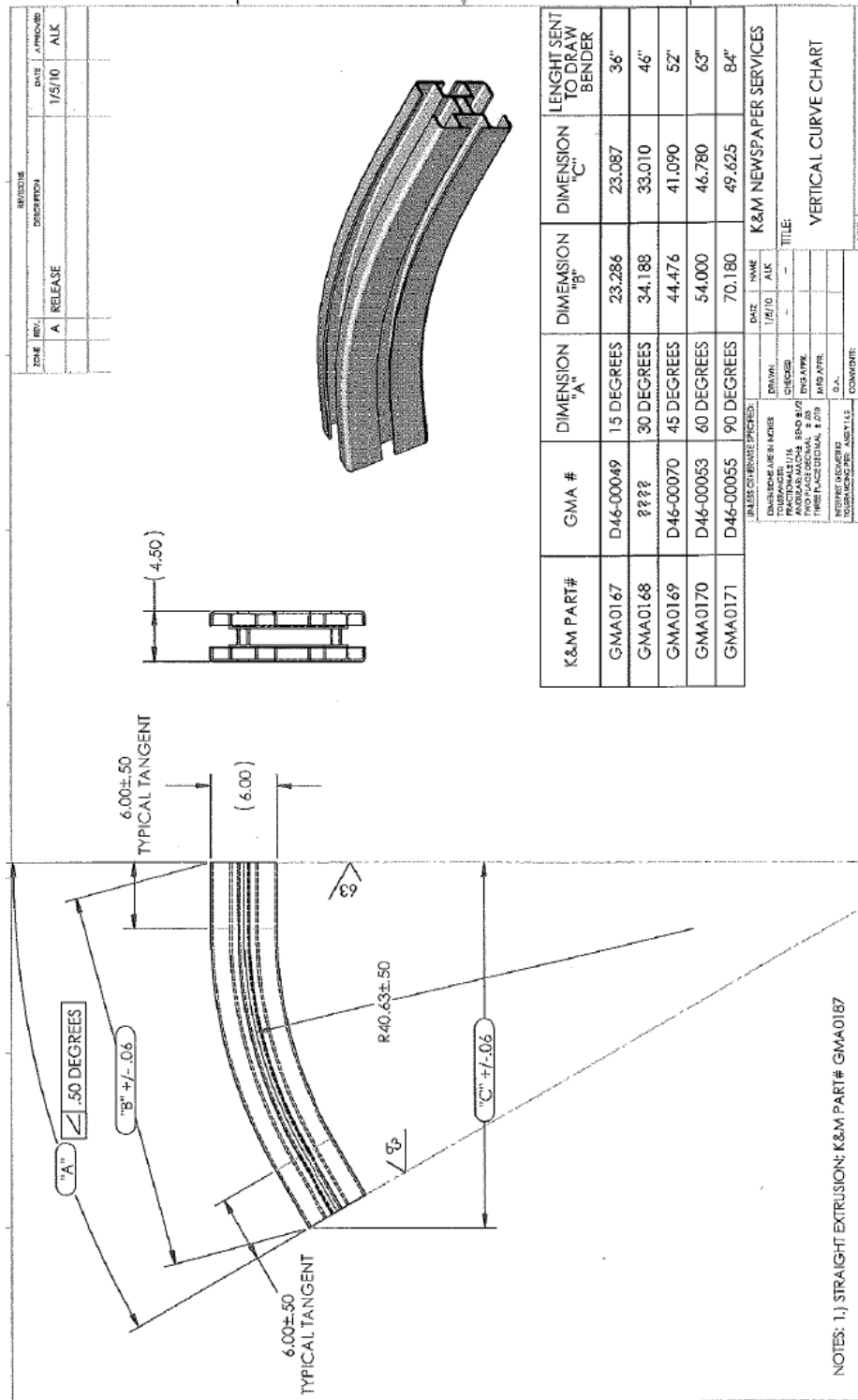
K&M PART #	GMA#	DIMENSION "A"	DIMENSION "B"	DIMENSION "C"	LENGTH SENT TO DRAW BENDER
GMA0172		15 DEGREES	23.995	23.790	46"
GMA0173	D46-00052	30 DEGREES	35.580	34.368	58"
GMA0174		45 DEGREES	47.791	43.672	64"
GMA0175	D46-00054	60 DEGREES	56.736	49.135	76"
GMA0176	D46-00056	90 DEGREES	74.094	52.340	99"
GMA0177		135 DEGREES	90.241	34.527	143"
GMA0178		180 DEGREES	92.688	-	198"



UNLESS OTHERWISE SPECIFIED:	DATE	NAME	K&M NEWSPAPER SERVICES
TOLERANCES ARE IN INCHES:	1/6/10	ALK	
FINISHES ARE:			
FINISHES ARE:			
FINISHES ARE:			
FINISHES ARE:			
FINISHES ARE:			
FINISHES ARE:			
FINISHES ARE:			
FINISHES ARE:			
FINISHES ARE:			

NOTES: 1.) USE EXTRUSION # GMA0187

TITLE: HORIZONTAL CURVE CHART



REBUILD FOR SLS2000 HOPPER CLUTCH



Return your clutch assembly to it's original specification with a rebuild from K&M. A rebuilt clutch includes inspection and rebuild if needed of the following key components;

Magnet & Coil
Hub & Rotor
Armature
Drive Plate
Switch
Bearings & snap rings

All rebuilt clutches will undergo testing prior to shipping and come with a **6 months warranty**. Customer will be responsible for return shipping.

Remanufactured Hopper Exchange

K&M Newspaper Services, Inc. a leading provider of automated newspaper inserting equipment offers a hopper exchange program.

- Completely remanufactured
- 1 year parts warranty standard

Let us rebuild your old worn-out hoppers

CALL FOR MORE INFORMATION

